

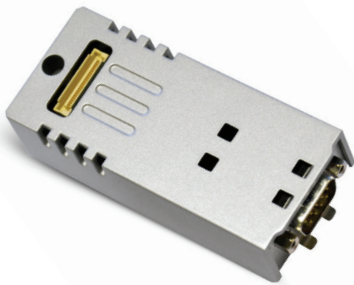
PLCM04 Plug-in module RS-422/RS-485 Tech-Note

PLCM04 is a plug-in module for use in all cases when an additional serial communication port is required for use with JMobile or CODESYS runtime.

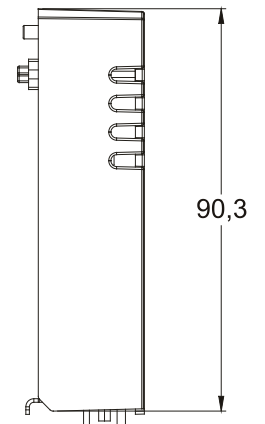
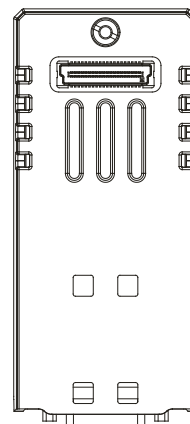
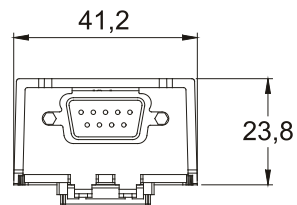
The plug-in is compatible with Series 500, 500G, 600, eX and eXware.

- RS-422/RS-485 interface
- Optical isolation
- Plug-in bus extender

Technical Data



Environmental Conditions	
Operating temperature	-20° to +60°C
Storage temperature	-20° to +70°C
Operating and storage humidity	5 – 85 % relative humidity, non-condensing
Protection class	IP20
Approvals	
CE	Emission EN 61000-6-4, Immunity EN 61000-6-2 for installation in industrial environments, Emission EN 60945, Immunity EN 60945 for marine environments
LR	Yes
RCM	Yes



Ordering Information

Model	Part Number	Description
PLCM04	+PLCM04U0P1	Plug-in module RS-422/RS-485